

MES PC Documentation



Contents

1	List of installed Software	3
2	Services	4
2.1	FactoryViews	4
2.1.1	Services	4
2.1.2	Control Panel	5
2.2	MariaDB Database	6
3	Project files	7
3.1	Drives	7
3.1.1	C drive for Windows and software	7
3.1.2	D drive for project files and documents	7
3.2	Additional software locations	8
3.2.1	hMail – C:\Program Files (x86)\hMailServer\Bin\hMailAdmin.exe	8
3.2.2	Thunderbird –D:\PortableApplications\ThunderBird\ThunderbirdPortable.exe	8
3.2.3	Wireshark – C:\Program Files\Wireshark\Wireshark.exe"	8
3.2.4	UaExpert – C:\Program Files (x86)\UnifiedAutomation\UaExpert\bin\uaexpert.exe	8
3.3	D:\PortableApplications – portable software tools	9
4	Password list	10

1 List of installed Software

Software	Version	Purpose
Windows 10		Operating System
Siemens TIAPortal	v.17 Update 2	Programming software for Siemens PLCs
Siemens WinCC Advanced	v.17 Update 2	Programming software for Siemens HMIs
Siemens S7 PCT-Tool	v.3.5 SP1	IO-Link modules config. tool
CODESYS	v.3.5 SP16 Patch 4	Programming software for Festo PLCs
CODESYS TSP for CECC	v.3.5.15	Target Support Package for Festo CECC PLC
CODESYS TSP for CPX-E-CEC	V 3.5.16	Target Support Package for Festo CPX-E PLC
Festo Field Device Tool	v.2.10.4.46788	Tool for configuration and backup and restore of Festo controllers
Festo FactoryViews	v.1.5.2	Festo Didactic software with IT services for learning factories, including MES4, Webshop, Energy Monitoring, Augmented Reality, and Node-RED
Siemens PRONETA	v.3.1.0.2	Commissioning and diagnostics tool for PROFINET
Wireshark	v.3.2.2	Ethernet communication monitoring software
NMAP	v.7.91	Security Scanner
Node-RED (empty)	v.1.3.7	Node-RED Programming Environment, empty, port 18890, user: admin, password: Festo4.0
hMail Server	v.5.6.4	E-mail Server, password: Festo4.0
Thunderbird	v.2.1.3	E-mail Client
Microsoft Edge	v. > 88	Preferred web browser
HeidiSQL	v.11.2	MySQL/MariaDB database client
NotePad++		Text editor

This table is not exhaustive and lists the most relevant software tools.

2 Services

2.1 FactoryViews

2.1.1 Services

FacotryViews will start automatically on start up. A Control Panel indicates that FactoryViews is running. Following services are started:

- NodeServer
- MES4Core
- Apache
- MySQL
- MongoDB
- Node-RED – MES4
- Node-RED – WebShop
- Node-RED – Stations
- Node-RED – Energy
- Node-RED – User

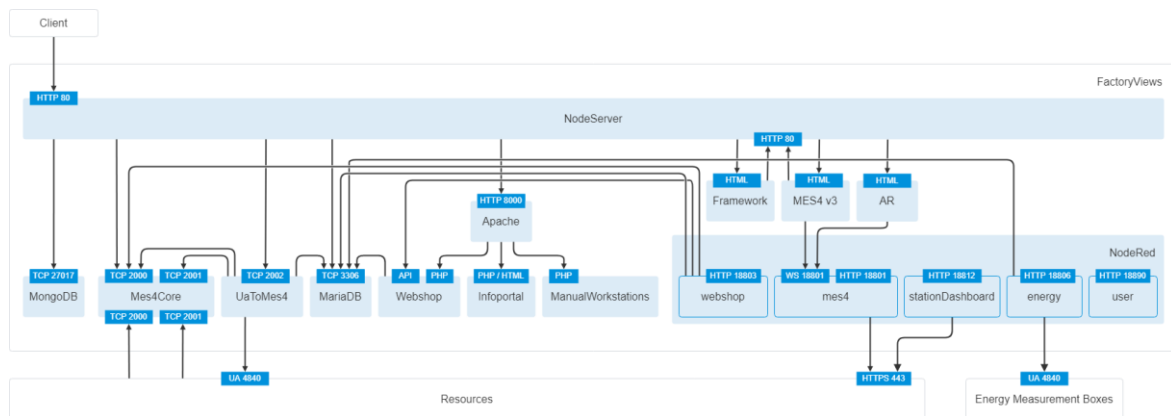


Figure 1 FactoryViews services overview

To start the application again, run “D:\FactoryViews\FactoryViews - ControlPanel.exe”

2.1.2 Control Panel

Status of the services can be monitored from control panel.

Blue tick ✓ indicates that the service is running.

Each service can be started and stopped with button.

Status of each service is shown on the status field in control panel.

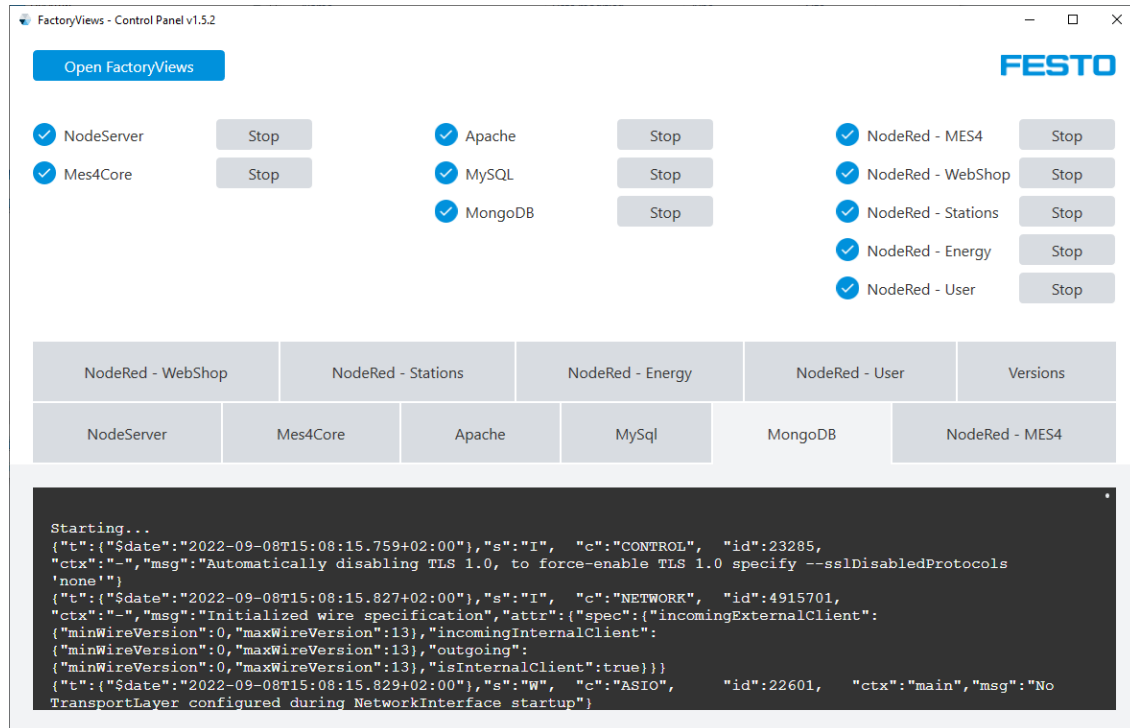


Figure 2 FactoryViews control panel

2.2 MariaDB Database

MariaDB Databases can be viewed with HeidiSQL.exe.

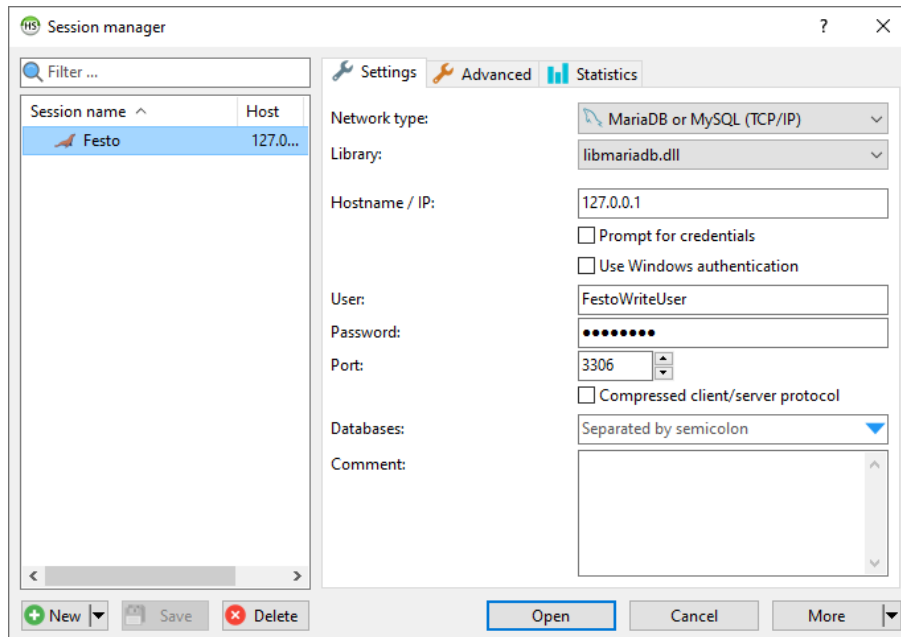


Figure 3 HeidiSQL session manager

Username: FestoWriteUser
Password: Festo4.0

3 Project files

3.1 Drives

3.1.1 C drive for Windows and software

3.1.2 D drive for project files and documents

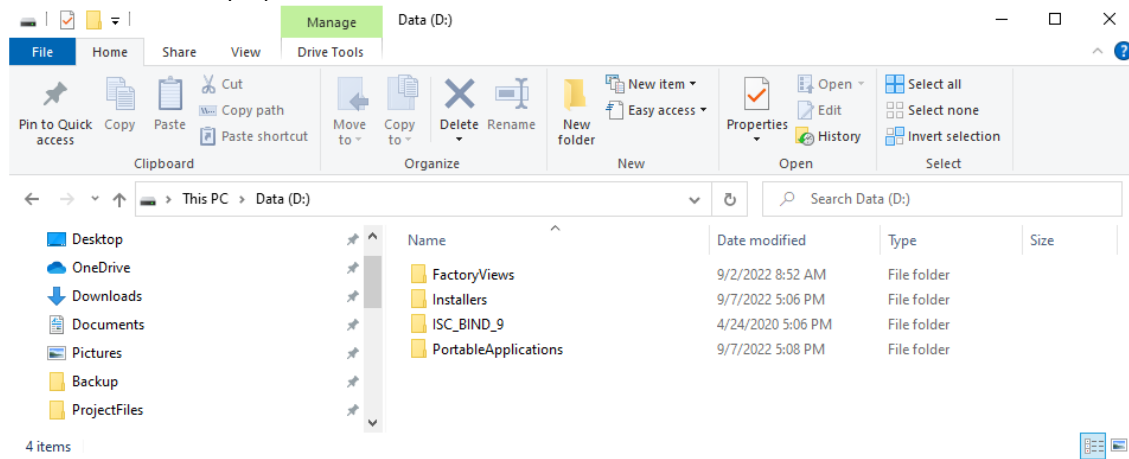


Figure 4 D-drive

3.2 Additional software locations

- 3.2.1 hMail – C:\Program Files (x86)\hMailServer\Bin\hMailAdmin.exe
- 3.2.2 Thunderbird – D:\PortableApplications\ThunderBird\ThunderbirdPortable.exe
- 3.2.3 Wireshark – C:\Program Files\Wireshark\Wireshark.exe"
- 3.2.4 UaExpert – C:\Program Files (x86)\UnifiedAutomation\UaExpert\bin\uaexpert.exe

3.3 D:\PortableApplications – portable software tools

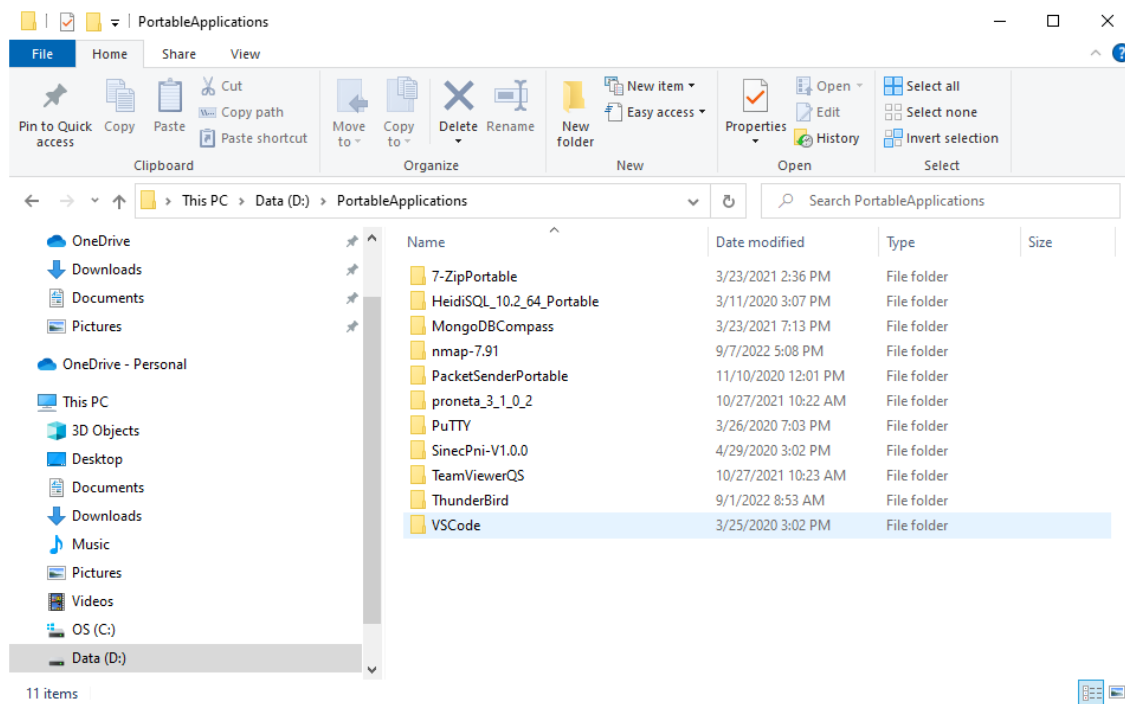


Figure 5 Portable software

4 Password list

Application	User	Password
MES-PC	Festo	Festo4.0
FactoryViews – MES4	admin	Festo4.0
	user	Festo4.0
hMail server		Festo4.0
Node-RED User	admin	Festo4.0
MariaDB	FestoWriteUser	Festo4.0